



lexie[®]

Lexie Hearing Aids Powered by Bose

RECEIVER AWIRE
REPLACEMENT GUIDE



We're here to help.



For help,
call (779) 212-7334 and speak
to a Lexie Expert™ or go to
lexiehearing.com/us/support

What you need:



Receiver wire

+

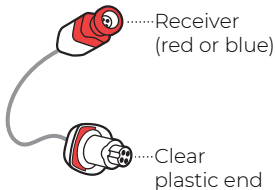


Hearing aids



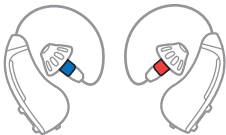
Dome kit
(optional)

Step 1:



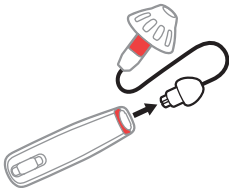
Identify the two ends of
the receiver wire.

Step 2:



On the hearing aids, find the old receiver wire that has the same color speaker as the new cable (red or blue).

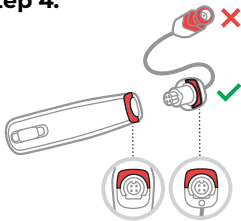
Step 3:



Firmly pull the old receiver wire until it detaches from the hearing aid body.

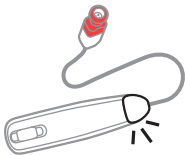
Note: You may have to pull harder than expected.

Step 4:



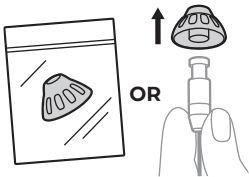
Align the clear plastic end of the new receiver wire with the port on the hearing aid body so the red or blue marks line up.

Step 5:



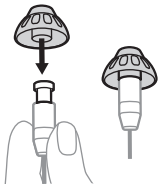
Insert the receiver wire into the hearing aid body until you hear or feel a click.

Step 6:



Get a dome for the new receiver wire. Either pick your size from a dome kit (available separately) or firmly pull the dome off of the old receiver wire.

Step 7:



On the new receiver wire, align the opening of the dome with the receiver and slide the dome onto the receiver.

Step 8:



Gently tug the dome to make sure it's securely fastened.

Note: This helps prevent the dome from falling off in your ear canal.



Copyright © 2016-2022
hearX IP (Pty) Ltd.